



*Strathbogie Shire Council*

# Waste & Resource Recovery Strategy

2019 – 2024



**Strathbogie**  
*shire*

# Contents

Preamble	3
Strategic Direction	4
Current Status	6
Guiding Principles	8
Kerbside Services	9
Landfills	9
RRC Infrastructure	10
Education & Engagement	10
Resource Recovery	11
Partners	12
Community	12
Litter	13
Illegal Dumping	13
Events	14
Advocacy	14
Evaluation	15

## Vision

*Strathbogie Shire Council provides efficient and cost effective waste management and resource recovery services and infrastructure that prioritise and facilitate waste minimisation, resource reuse and recovery over disposal.*

# Preamble

The Strathbogrie Shire Council Waste and Resource Recovery Strategy (WRRS) has been developed as part of Council's commitment to sustainably manage our natural and built environment.

The key aim of the WRRS is to guide the development and improvement of current waste and resource recovery practices to ensure sustainable outcomes for the collection, disposal and recovery of resources from waste generated within the Strathbogrie Shire community over the next five years (2019 – 2024).

The objectives of the Waste and Resource Recovery Strategy are to:

- Reduce the quantity of waste sent to landfill;
- Improve the quality of recyclable materials sent for reprocessing.
- Increase the amount of waste recovered for recycling or reuse.
- Reduce litter and dumped rubbish and improve waste and recycling infrastructure in public places.
- Provide waste and resource recovery services and infrastructure to meet the needs of our community and to protect and maintain these in a financially, socially and environmentally responsible manner.
- Promote waste minimisation initiatives within our community.
- Participate in and facilitate regional, state and national partnerships.

In developing this strategy, consideration has been given to the key challenges for waste and resource recovery services across Strathbogrie Shire. These challenges include:

- Maintaining equitable waste services when servicing a Shire with an ageing demographic and a small population base spread across a large area.
- Improving Resource Recovery Centre infrastructure to meet best practice standards.
- Future financial and environmental liabilities relating to the rehabilitation of historic landfill sites given Council's constrained resources.

Conversely there are also a number of opportunities that exist for Council in delivering waste and resource recovery services. These opportunities include a renewed state level focus on waste and resource recovery as a priority environmental issue and an increased level of program support and funding.

Objectives and actions contained within this strategy underpin, contribute and inform the future operations of Council's waste and resource recovery services. The actions have been prioritised for delivery over the life of the Waste and Resource Recovery Strategy from 2019 to 2024, and will be presented annually to Council in the form of an Annual Waste and Resource Recovery Activity Plan for consideration for funding in future budgets.

# Strategic Direction

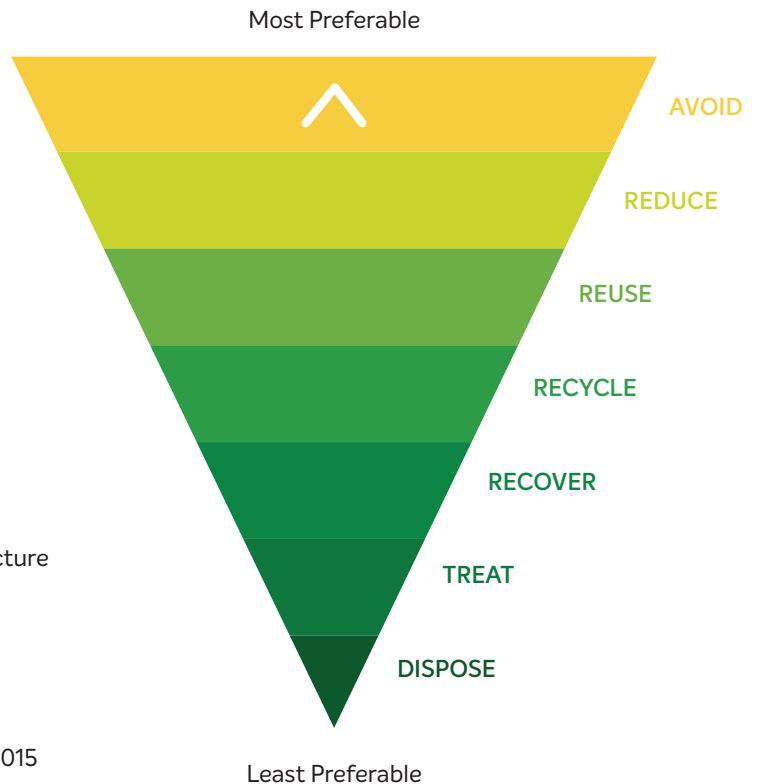
## & Supporting Documents

This strategy has been developed in line with relevant federal, state and local government legislation, strategies and policies.

These legislation, strategies and policies generally align with the waste management hierarchy as shown opposite.

### Key documents include:

- Less Waste More Resources (2009)
- Statewide Waste and Resource Recovery Infrastructure Plan – April 2018 (SWRRIP)
- Goulburn Valley Waste and Resource Recovery Implementation Plan – 2017 (GVWRRIP)
- Victorian Waste Education Strategy (2016–21)
- Victorian Organics Resource Recovery Strategy – 2015
- Goulburn Valley Waste and Resource Recovery Group – Regional Resource Recovery Centre Strategy – 2017
- Goulburn Valley Regional Waste and Resource Recovery Education Strategy (to be developed 2019)
- Southern Goulburn Valley Regional Waste and Resource Recovery Education Strategy (to be developed 2019)
- Environment Protection Act – 1970
- Local Government Act – 1989
- Council Plan 2017–21 (Council Plan key strategy “Provide efficient and effective waste management programs”)
- Council’s “Kerbside Waste Collection Services Policy”
- Council’s “Sustainable 2030” (currently being drafted)



### The state directions and regional objectives can be summarised as:

- Maximising the diversion of recoverable materials from landfills
- Supporting increased resource recovery
- Achieving quantities for reprocessing
- Managing waste and material streams
- Maximising economic outcomes, providing cost effective service delivery and reducing community, environment and public health impacts

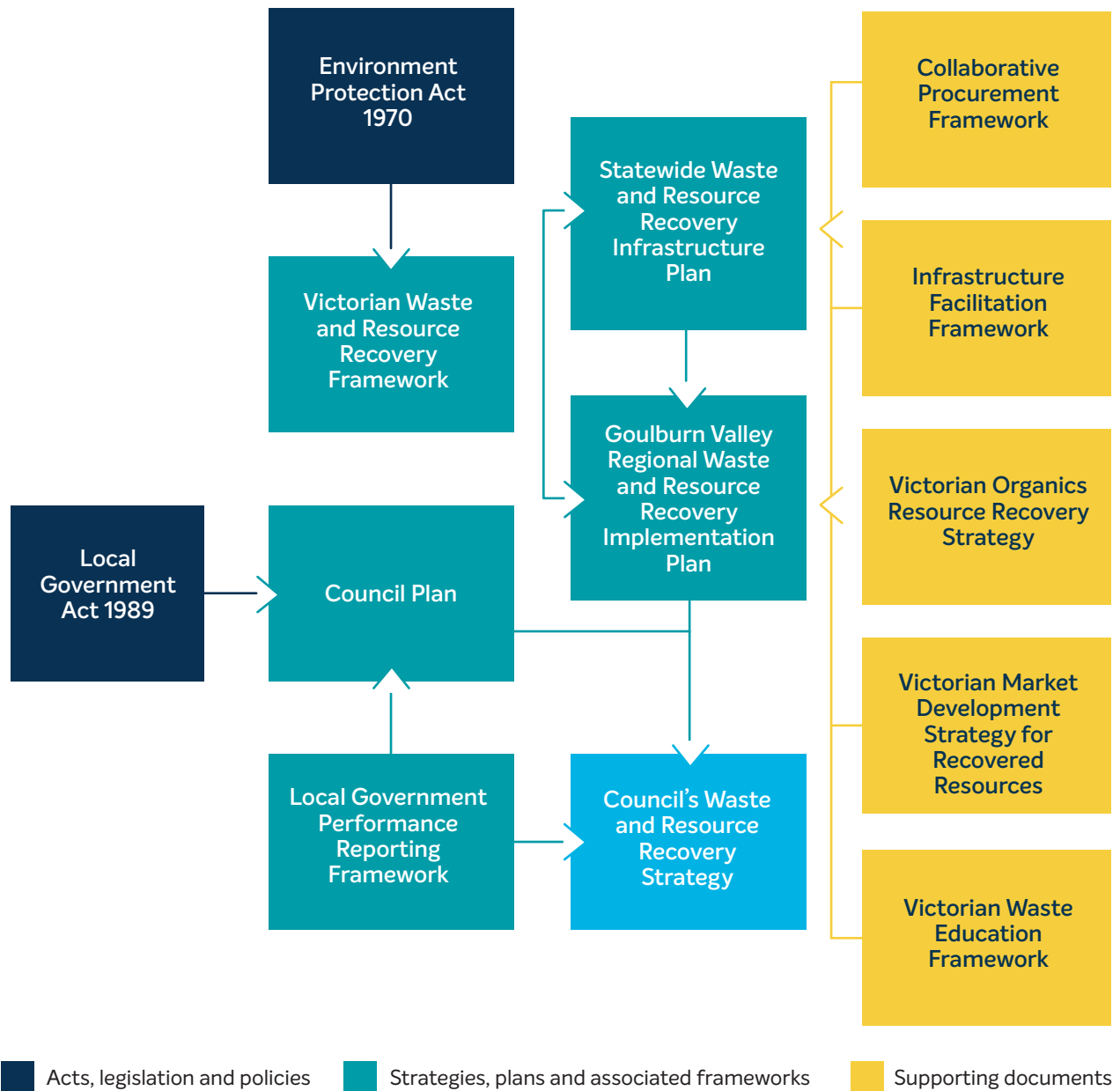
# Strategic framework for waste and resource recovery

Commonwealth and Victorian Government legislation, policies and strategies provide the framework for Council's waste and resource recovery activities. The following figure illustrates how the legislation, policies and strategic plans are considered and integrated with the Waste and Resource Recovery Strategy.

## Commonwealth Context

National Waste Policy 2009 National Product Stewardship Act

## Victorian Context



# Current Status

Whilst a dedicated Waste and Resource Recovery Strategy has not been in place over recent times, Council has delivered the following, significant activities that have reduced waste to landfill, recovered materials and ensured infrastructure and services meet best practice. These actions have also ensured that council is aligned with the state and regional directions and objectives captured above.

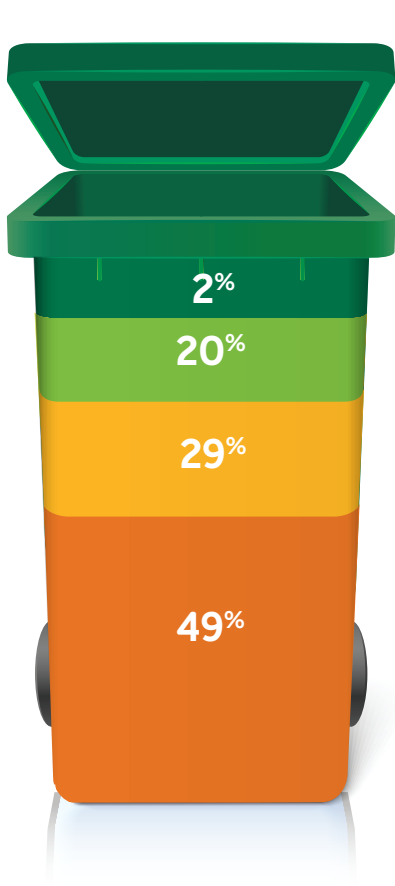
## Initiatives implemented over the past five years include:

- The introduction of a weekly Food Organics and Garden Organics (FOGO) kerbside collection service in July 2015, incorporating the transition to a fortnightly landfill waste kerbside collection service.
- The introduction of additional kerbside services — 80 litre landfill waste bin and 360 litre recycle bin.
- Minor upgrade projects implemented at the Euroa, Nagambie, and Avenel Transfer Stations / Resource Recovery Centres.
- The appointment of a shared Waste and Resource Recovery Education Officer servicing the three Southern Goulburn Valley Region councils.
- The development of a Southern Goulburn Valley Regional Waste and Resource Recovery Education Strategy.
- Audits of kerbside organics and landfill waste bins.

## This has led to the following achievements:

- Waste to landfill from kerbside services reduced by 47% or 888 tonnes.
- The recovery of recyclables from kerbside services increased by 17% or 155 tonnes.
- Recovery of food and garden organics through the kerbside service has increased by 20% or 212 tonnes since introduction in 2015/16.
- Additional materials recovered from Transfer Station / Resource Recovery Centres.
- Landfill Waste bin audits conducted in 2010 and again in 2015 demonstrate the average bin weight has reduced from 11.3kgs per week in 2010 to 5.0kgs in 2015, a 56% reduction.

## Average Strathbogie Landfill Waste Bin (2018)

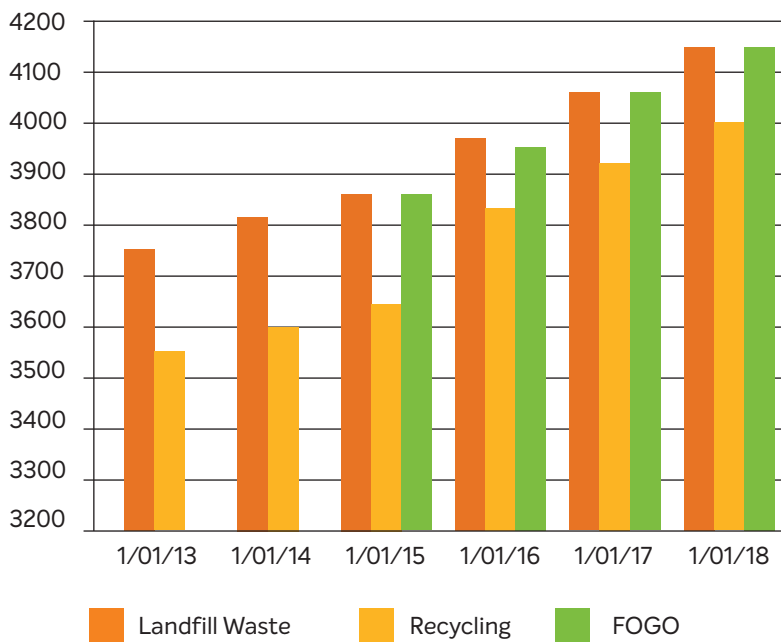


-  GARDEN ORGANICS
-  FOOD ORGANICS
-  RECYCLING
-  LANDFILL WASTE

Over the past five years, the number of kerbside landfill waste collection services has grown by 384 (10%), whilst the number of kerbside recycling collection services has grown by 465 (13%).

Since the introduction of the kerbside FOGO collection service in July 2015, the number of collection services has grown by 277 (7%).


### Number of kerbside collection services



## Population

# 10,455

 **2341** (23%)  
Under 25 Years

 **5931** (58%)  
25 - 69 Years

 **1986** (19%)  
Over 69 Years

## Population Growth

# 8.2%

(2011-2016)

## Households

# 14,813

**19%** COUPLES WITH CHILDREN

**31%** COUPLES WITHOUT CHILDREN

**30%** LONE PERSONS

## Household Growth

# 11.3%

(2011-2016)

2016 ABS Census Data

# Guiding Principles

Council has developed principles to guide how waste and resource recovery services will be implemented and managed, they are:

1. Resource recovery is prioritised where it is economically viable and where it improves community, environment and public health outcomes.
2. The delivery of kerbside collection services will align with council's "Kerbside Waste Collection Services Policy".
3. Council is committed to waste and resource recovery education through the appointment of a Waste and Resource Recovery Education Officer and the development of the Southern Goulburn Valley Waste and Resource Recovery Education Strategy, in partnership with Mitchell Shire and Murrindindi Shire Councils.
4. Successful waste minimisation and diversion can only truly be maximised through effective partnerships. Council will partner where mutually beneficial outcomes can be achieved.
5. Council will advocate on behalf of the community on waste and resource recovery issues.
6. Council seeks to be a leader in waste management and resource recovery through current best practice approaches and infrastructure.
7. Social and environmental compliance are key drivers for action and change. Council commits to being compliant at all times.
8. Council will prioritise the uptake of services, programs and behaviours that align with the waste hierarchy through incentives where appropriate rather than through enforcement approaches.
9. Council will maximise its ability to access grants and meet infrastructure and program needs through an annual allocation of capital works funds to be determined through the budget process.
10. The collection of data to support decision making is valued and prioritised. Decisions are made based on facts and data.
11. Where approaches fall outside these principles staff will seek direction from council in all cases.

## Objectives

The objectives below are to be delivered across multiple themes addressed in the proceeding pages of this strategy. Implementation of the future directions/ opportunities identified within the themes will help achieve these objectives. They are:

1. Provide an efficient and cost effective service.
2. Minimise waste to landfill.
3. Influence behaviour through the Southern Goulburn Valley Waste and Resource Recovery Education Strategy
4. Advocate on waste and resource recovery issues that impact the community.



# Kerbside Services

## Status

### LANDFILL WASTE BIN

**4127**

fortnightly collections

**997**

tonnes per year



### RECYCLE BIN

**4002**

fortnightly collections

**1030**

tonnes per year



### RECYCLE BIN

**4127**

fortnightly collections

**1270**

tonnes per year



*\*figures are for the calendar year 2017*

## Future direction/opportunities

Continual monitoring and investigation into potential extensions to Council's collection routes will be conducted in conjunction with community and collection contractors. Kerbside audits conducted by council demonstrate that food organics (23%) and recyclable materials (29%) are still evident in the landfill waste stream. Council will continue to seek increased diversion of materials from landfill by:

- Promoting the benefits of the existing organics and recyclables collection services
- Evaluating soft plastic recycling services that complement current services and are cost effective.
- Reducing contamination in all three bins.

Council will also need to monitor the status of its current, short term Recyclables Acceptance and Sorting Contract, with a view to renegotiating / retendering this contract before its expiry on June 30, 2020.

# Landfills

## Status

Council's only EPA licensed landfill (Violet Town Landfill) complies with legislative requirements applied by the EPA via the issuing of a Post Closure Pollution Abatement Notice (PC PAN)

Under two projects initiated by GVVRRG, all of Council's unlicensed landfills (Euroa, Avenel and Nagambie,) have recently been assessed to establish the risk they pose to the environment as well as risks associated with planning controls on and around the sites.

## Future direction/opportunities

Council is legislated and has an environmental responsibility to protect human health and the environment from the impacts of landfills. Council will continue to manage, monitor and report the condition of each landfill to meet legislative requirements where they exist.

Under the current PC PAN, Council is also committed to commencing and completing construction of the capping over the Violet Town Landfill within the term of this strategy.

# RRC Infrastructure

## Status

Strathbogie Shire Council operates eight fit for purpose waste transfer stations / resource recovery centres located strategically across the shire at Avenel, Euroa, Graytown, Longwood, Nagambie, Ruffy, Strathbogie and Violet Town. A significant number of materials are recovered through these facilities annually.

## Future direction/opportunities

A project implemented by the Goulburn Valley Waste and Resource Recovery Group identified a number of opportunities that could enhance the customer experience and improve safety, efficiency and environmental outcomes. In striving to meet these opportunities council will:

- continually monitor the operational efficiency of all sites.
- ensure all key sites work towards meeting current best practice.
- continue to increase the diversion of materials from landfill.
- Investigate participation in collaborative procurement opportunities through GVWRRG.
- establish ways in which data can be better captured and analysed.



**Agricultural chemical drums**  
4700



**E-waste**  
30 tonnes



**Garden organics**  
715 tonnes



**Mattresses / soft furnishings**  
580



**Motor oil**  
5800 litres



**Steel**  
300 tonnes



**Tyres**  
1600

# Education and Engagement

## Status

With limited resources at both Council and regional level, the development of long term, effective waste and resource recovery education initiatives has been lacking.

## Future direction/opportunities

Effective education is a powerful tool for achieving long term behaviour change. It provides opportunities to shift attitudes and increase understanding, ultimately leading to a change in the levels of awareness and behaviour. The importance of bringing the community along with council cannot be underestimated. Education is a vital element in achieving this. Therefore, Council commits to:

- supporting the engagement and continuation of a shared Waste and Resource Recovery Education Officer position with Mitchell Shire and Murrindindi Shire Councils.
- implementing the actions incorporated in the Southern Goulburn Valley Regional Waste and Resource Recovery Education Strategy.

# Resource Recovery

## Status

Council currently diverts all materials that are economically and environmentally appropriate to do so. These include food and garden organics, commingled recyclables, paper and cardboard, steel, whitegoods, gas bottles, fluorescent lights, automotive batteries, mattresses and soft furnishings, e-waste, motor oil, tyres, mobile phones, some timber, agricultural chemical drums and silage wrap

## Future direction/opportunities

The importance of recovering materials from the waste stream is well documented and all levels of government have a focus in this area. Opportunities to improve resource recovery will continually be presented to council. The following are currently foreseeable:



## E-waste

Is currently the fastest growing waste stream in Australia. A ban on these items going to landfill is being implemented by the Victorian State Government from July 1 2019



## Soft Plastics

A large component of the waste stream that is currently not being effectively captured for recovery and reuse.



## Timber

A resource that can be reused. Contributes to greenhouse gas emissions in landfill.



## Furniture

Not all furniture is currently recovered. Bulky product with reusable components.



## Detox

Providing timely and convenient options for the disposal of household chemicals.



## Agricultural/farm waste

A significant agricultural industry exists that uses products that can be recycled and recovered.

# Partners

## Status

The Strathbogie Shire Council partners where mutually beneficial outcomes can be achieved. The Goulburn Valley Waste and Resource Recovery Group (including its five other member councils) is a key partner that council currently works closely with to achieve these outcomes. Other groups include Environment Protection Authority, Sustainability Victoria and Department of Environment, Land, Water and Planning.

Another important partner that council must continue to work closely with to assist us to achieve our objectives are our waste and resource recovery contractors. Council will work closely with contractors to improve services, reduce costs, reduce waste to landfill and recover materials.

## Future direction/opportunities

With limited resources, Council understands the importance of partnering to assist in achieving economic, social and environmental outcomes.

Therefore we will:

- Continue to partner where mutually beneficial outcomes can be achieved.
- Investigate further opportunities to form mutually beneficial partnerships.

# Community

## Status

An involved and engaged community is crucial for council in being able to meet its objectives and maintain an efficient and effective essential service and protect the environment. Placing emphasis on resources for education engages the community and secures buy in.

Council engages with the community through the actions developed within the Southern Goulburn Valley Regional Waste and Resource Recovery Education Strategy.

## Future direction/opportunities

Council understands the importance of engaging with the community to ensure economic, social and environmental outcomes can be achieved. As such, Council has committed to developing and implementing a Community / Stakeholder Engagement Plan to assist with the establishment and delivery of this strategy. Council will also continue to:

- Engage with the community through the Southern Goulburn Valley Regional Waste and Resource Recovery Education Strategy.
- Work with the community to deliver appropriate high quality waste and resource recovery services.

# Litter

## Status

Council uses a combination of education, infrastructure and enforcement as outlined in the Victorian Litter Strategy to influence behaviour change associated with litter.

Approximately 80% of Council's Street litter infrastructure has been upgraded to current best practice standard..

The Southern Goulburn Valley Regional Waste and Resource Recovery Education Strategy will incorporate specific litter education components.

Enforcement occurs through Council's Local Laws Unit under the Environment Protection Act 1970 and Local Law number 8 2015.

## Future direction/opportunities

Although council is addressing litter as outlined in the Victorian Litter Strategy, data regarding the extent of the issue in Strathbogie is limited.

Education, infrastructure and enforcement is considered the best approach to the problem.

Council will therefore:

- Seek to gain a greater understanding of the problem through the improved collection of data.
- Continue to address the issue through a combination of education, infrastructure and enforcement.

# Illegal Dumping

## Status

Reports of illegal dumping are acted upon and cleaned up where they exist on council owned land.

Where possible investigations to establish who dumped the rubbish are undertaken and enforcement actions instigated.

## Future direction/opportunities

Council does not have accurate data regarding illegal dumping within the municipality. Council will therefore:

- Seek to gain a greater understanding of the problem through the collection of data.
- Continue to address the issue of illegal dumping within the municipality through education, infrastructure and enforcement activities.

# Events

## Status

- A contracted price for special event bin supply and emptying has been established through the current Landfill Waste, Recyclables and Organics Collection Contract.
- An Event Plan for event organisers has been developed and incorporates requirements for the management of waste and resource recovery.
- Provision of waste and resource recovery services via the Landfill Waste, Recyclables and Organics Collection Contract for events is managed by Council's Waste Engineer.
- Events are required to comply with the Waste Wise Event Guide to be eligible for services from Council.

## Future direction/opportunities

There are significant opportunities for council to improve the management of unwanted materials at events, to assist council will:

- Develop an Event Waste and Resource Recovery Guide that outlines important waste avoidance and resource recovery specific requirements for events based on the measures event organisers are prepared to implement.
- Encourage event organisers to implement higher standards of waste avoidance and resource recovery at events through objectives and actions developed within the Southern Goulburn Valley Regional Waste and Resource Recovery Education Strategy.

# Advocacy

## Status

Council advocates on behalf of the community on waste and resource recovery issues.

Advocacy on waste and resource recovery issues will be incorporated into the Southern Goulburn Valley Regional Waste and Resource Recovery Education Strategy.

## Future direction/opportunities

The waste and resource recovery industry is undergoing rapid change. Governments are regularly developing and implementing policies and legislation to guide the industry and improve environmental outcomes. This change is impacting the community. To assist the community,

GVWRRG will be developing an advocacy plan to cover its six member councils to ensure we are able to effectively participate in and are included / engaged in waste and resource recovery issues important to us..

# Evaluation

1. Reduce the average amount of landfill waste generated per household (kg/hh/wk).
  - 2010 bin audit average 11.3kgs
  - 2015 bin audit average 5.0kgs
2. Increase the diversion of materials collected through kerbside systems (current diversion rate 69.75%, increase by 2% per year).
3. Increase the diversion rate through resource recovery centres.
4. Reduce contamination in kerbside recycling and organics.
  - Audits performed every year.
5. Evaluate the delivery of actions in the annual activity plan.

## Acronyms

<b>EPA</b>	Environment Protection Authority
<b>WRRS</b>	Waste and Resource Recovery Strategy
<b>GVWRRG</b>	Goulburn Valley Waste and Resource Recovery Group



**Strathbogie**  
*shire*

**Freecall**  
**1800 065 993**

**E [info@strathbogie.vic.gov.au](mailto:info@strathbogie.vic.gov.au)**  
**[www.strathbogie.vic.gov.au](http://www.strathbogie.vic.gov.au)**

