

**Date Issued: 24 June 2021**

**NOTICE OF AN APPLICATION FOR A PLANNING PERMIT**

The land affected by the application is located at: **533 Zanelli Road, Nagambie  
VIC 3608**

The application is for a Permit for: **Use and Development for a  
Mineral Processing Facility (to  
process gold bearing ore with  
tailings processing and  
storage); and Native Vegetation  
Removal**

The applicant for the Permit is: **Scolexia Pty Ltd**

The application Reference Number is: **P2021-050**

You may view the application and any documents that support the application on our website at

<https://www.strathbogie.vic.gov.au/development/statutory-planning/planning-permits-currently-advertised>

or at the office of the Responsible Authority during office hours:

*Strathbogie Shire Council 109A Binney Street Euroa  
Telephone: (03) 5795 0000*

Any person who may be affected by the granting of the Permit may object or make other submissions to the Responsible Authority.

An objection must be sent to the Responsible Authority in writing, include the reasons for the objection and state how the objector would be affected.

***The Responsible Authority will not decide on the application before: 15 July 2021***

All objections are placed on the relevant Planning Permit application file, which is publicly available at all times. Objections can therefore be read and used by other parties.

An objection form is available from Strathbogie Shire Council office, by phoning Council on (03) 5795 0000 or at <https://www.strathbogie.vic.gov.au/development/statutory-planning/objections>

If you submit an objection, the Responsible Authority will tell you of its final decision.



# THE PROPOSAL

Gold Toll Treatment  
Plant and Tailings  
Storage Facility

Nagambie Resources Limited (NRL), in partnership with Golden Camel Mining (GCM), propose to operate an oxide-gold toll treatment plant and tailings storage facility at the **NAGAMBIE MINE**, located approximately 8 km east of the Nagambie Township.

Partnership

NRL provides the highly suitable legacy mine site that has been used for mining purposes since 1989. GCM provides world's best practice processing facility construction and operating experience.

World's best practice  
facility

The proposed facility would be a **ZERO RELEASE** operation facility. The toll treatment plant will have the capacity to process 180,000 tonnes of ore per annum using proven Carbon in Leach (CIL) technology to extract gold and silver. The waste rock (tailings) would be stored in geotextile tubes (geotubes) and dry-stacked in a tailings storage facility that eliminates the risks associated with traditional storage of tailings in large dams. The facility would operating 24 hours per day receiving 21 ore truck deliveries each day.



# PROPOSED SITE LAYOUT



- Proposed land use is compatible with existing operations
- Facility would use already disturbed areas with minimal vegetation removal
- Nearest dwelling over 2km west of proposed facility
- Noise, dust and light impacts eliminated due to shielding from existing heap structures to the east, west and south
- Avoidance of potential cultural heritage sensitive areas
- Site not impacted by 1% AEP floodwaters

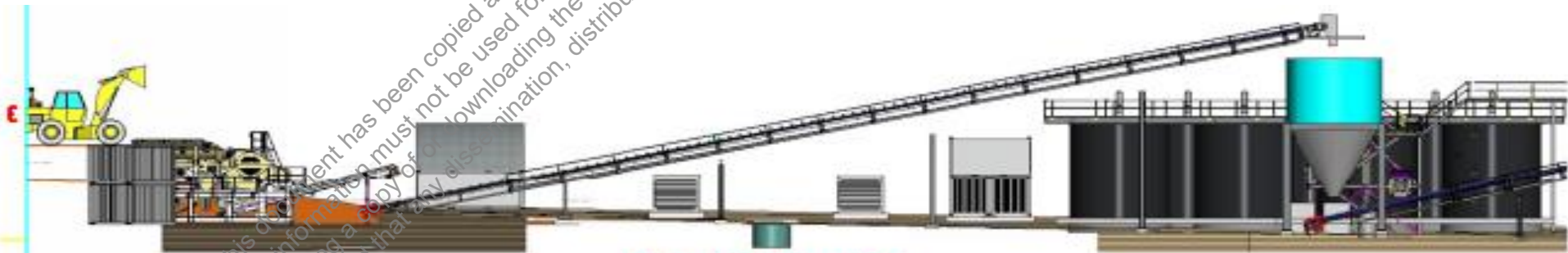




# MINERAL PROCESSING PLANT



- Modular design for operational efficiency
- A primary crusher and secondary grinding circuit
- Six tanks for cyanide leaching of gold
- Gold recovery circuit
- INCO system to detoxify cyanide before tailings storage in a lined cell
- Gas fired power for plant start up only



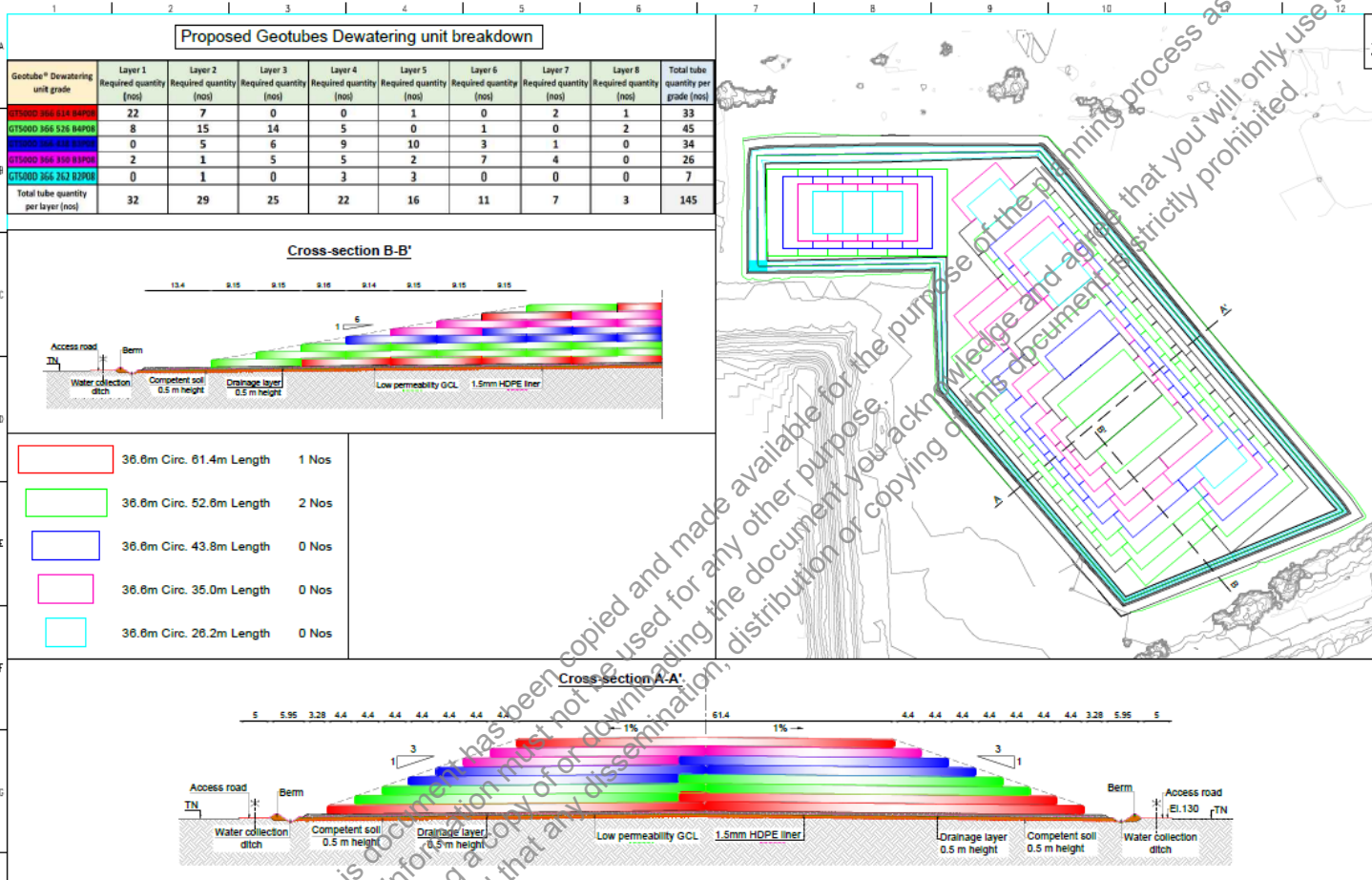
**VIEW LOOKING WEST**

This document has been copied and made available for your knowledge. I agree that you will only use the document for the purpose specified above and that any dissemination, distribution or copying of this document is strictly prohibited.

This document is a planning process as set out in the Planning and Environment Act 1987.



# TAILINGS STORAGE FACILITY



- Tailings stored in high-strength geo-tubes
- Geo-tubes stacked 16m high within enclosed HDPE lined cell
- Process water drains from geo-tubes and reused. No release of process water from circuit
- Drained tailings are geotechnically stable
- Tailings can be re-purposed in future
- Geo-tube stack rehabilitated to undulating grazing land

This document has been copied and made available for the purpose of the planning process as set out in the Planning and Environment Act 1987. The information must not be used for any other purpose. By taking a copy of or downloading the document you acknowledge and agree that you will only use the document for the purpose stated above and that any dissemination, distribution or copying of this document is strictly prohibited.



# PROPOSAL IMPACTS & BENEFITS

## NOISE AND VISUAL IMPACT

Noise impact from operations at the process plant is not expected to be significant as operations are over 2 kms from the nearest residential dwelling and shielded by the existing waste dumps.

Truck traffic limited to daylight operation only on weekdays only.

## DUST

A water truck will be used to ensure internal roads are kept damp to minimize dust generation. Crushing on dayshift only with dust suppression sprinklers

## SURFACE AND GROUND WATER

HDPE liner installed under TSF, so no seepage from tailings to groundwater.  
Water from tailings reused in process plant.  
Stormwater contained onsite in existing structures.

## NATIVE VEGETATION

The proposal will only remove three existing trees.  
A green zone of existing trees will be left between the plant site and the TSF.  
Land returned to grazing activity after operations.

## PROPOSAL BENEFITS

The Proposal would achieve:

- Direct economic investment and job creation (16+ positions in Nagambie, 44+ positions in Central Victoria)
- First time use of INCO cyanide detoxification and geo-tube tailings storage technologies in Victoria
- Provide Nagambie with the basis of an industrial precinct utilising best practice technologies
- Utilisation and repurpose of existing disturbed site
- Re-invigorate Victorian gold mining industry with processing capability, creating and supporting ongoing employment in the region